

## Construction

The fixture housing is made of 6063-T5 aluminum extrusions. Reflectors are of specular aluminum sheet metal construction featuring a 95% reflectance. The video light provides vertical illumination for videoconferencing while direct task lights provide general room illumination. As an option, fixtures can be configured with task or video lights only.

## Fixture Body Finish

Low-gloss Signal White finish (Ral #9003, smooth satin).

## Power and Control

All LED Drivers are high-frequency electronic, with a power factor >.94, THD <10%, and a Class A sound rating.

## LED Technology

The fixture utilizes remote phosphor technology to emit high quality illumination (>95 CRI) for videoconferencing and general lighting applications. Each channel has a variable power wattage range from 10-watts to 24-watts per linear foot.

## Electrical Certifications

UL, cUL, and CE

## Directional Beam Angle

The two video components are positioned at a 45° angle with a 25° beam spread. The task component emits a 55° beam angle. The wide task beam allows for the task and video beams to overlap slightly, creating a combined field of light.

## Accessories

Louvers provide complementary aesthetics to most architectural styles. Louvers available in white or custom finish. Glare reduction filter is integral to the fixture.

## Fixture Dimensions, Aperture and Weight

**4-foot:** Inch 47.75-in x 9.80-in x 7.50-in  
(1212.85-mm) x (248.70-mm) x (190.50-mm)  
Aperture: 5.00-in x 47.55-in  
(127.00-mm) x (1207.77-mm)  
Fixture weight: 46.00-lbs\* (20.90-kg)

**2-foot:** Inch 23.75-in x 9.80-in x 7.50-in  
(603.25-mm) x (248.70-mm) x (190.50-mm)  
Aperture: 5.00-in x 23.55-in  
(127.00-mm) x (598.17-mm)  
Fixture weight: 25.31-lbs\* (11.50-kg)

\* Weight provided is for Double VideoPlus configuration; consult factory for weights for other models and distribution equipment. Weight is approximate.

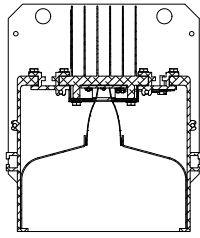


*US and Foreign Patents Pending.*

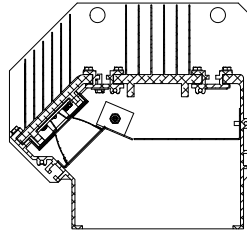
580 Mayer Street - Building # 7 - Bridgeville, PA 15017 USA

Phone: 1.412.206.0106

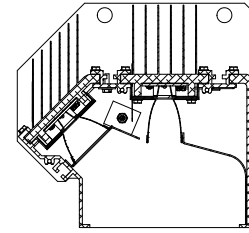
[www.brightlines.com](http://www.brightlines.com)



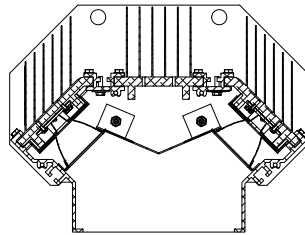
Task Only



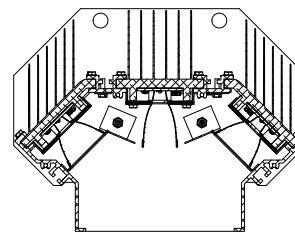
Video Only



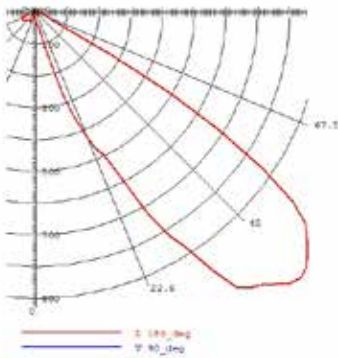
Video + Task



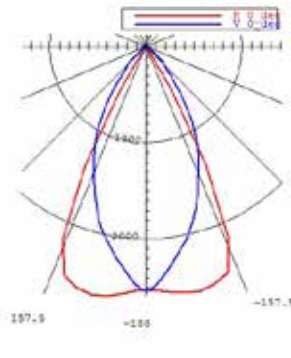
Double Video



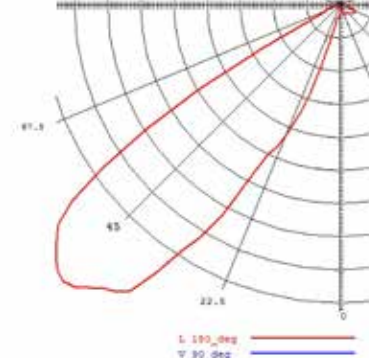
Double Video + Task



**Videoconference Light with Lens**  
45° vertical light distribution



**Task Light**  
90° horizontal light distribution



**Videoconference Light with Lens**  
45° vertical light distribution

All Configurations are available in Continuous Runs.

<b>LVP</b>								
LED VideoPlus	Length	Control Protocol	Voltage	Video LED	Task LED	Video LED	Color Temperature	Power/Distro Mounting
	2 = Two Foot	A = 0 - 10V	1 = 120V	V = YES	T = YES	V = YES	32 = 3200°K	C = Ceiling
	4 = Four Foot	E = Ecosystem	2 = 230V	0 = NO	0 = NO	0 = NO	41 = 4100°K	
		N = Non-Dim	7 = 277V				56 = 5600°K	
		X = Digital	P = PoE					

Note: PoE available on 1 and 2 channel models only.  
Please specify fixture length in 2-ft increments.

580 Mayer Street - Building # 7 - Bridgeville, PA 15017 USA

Phone: 1.412.206.0106

www.brightlines.com



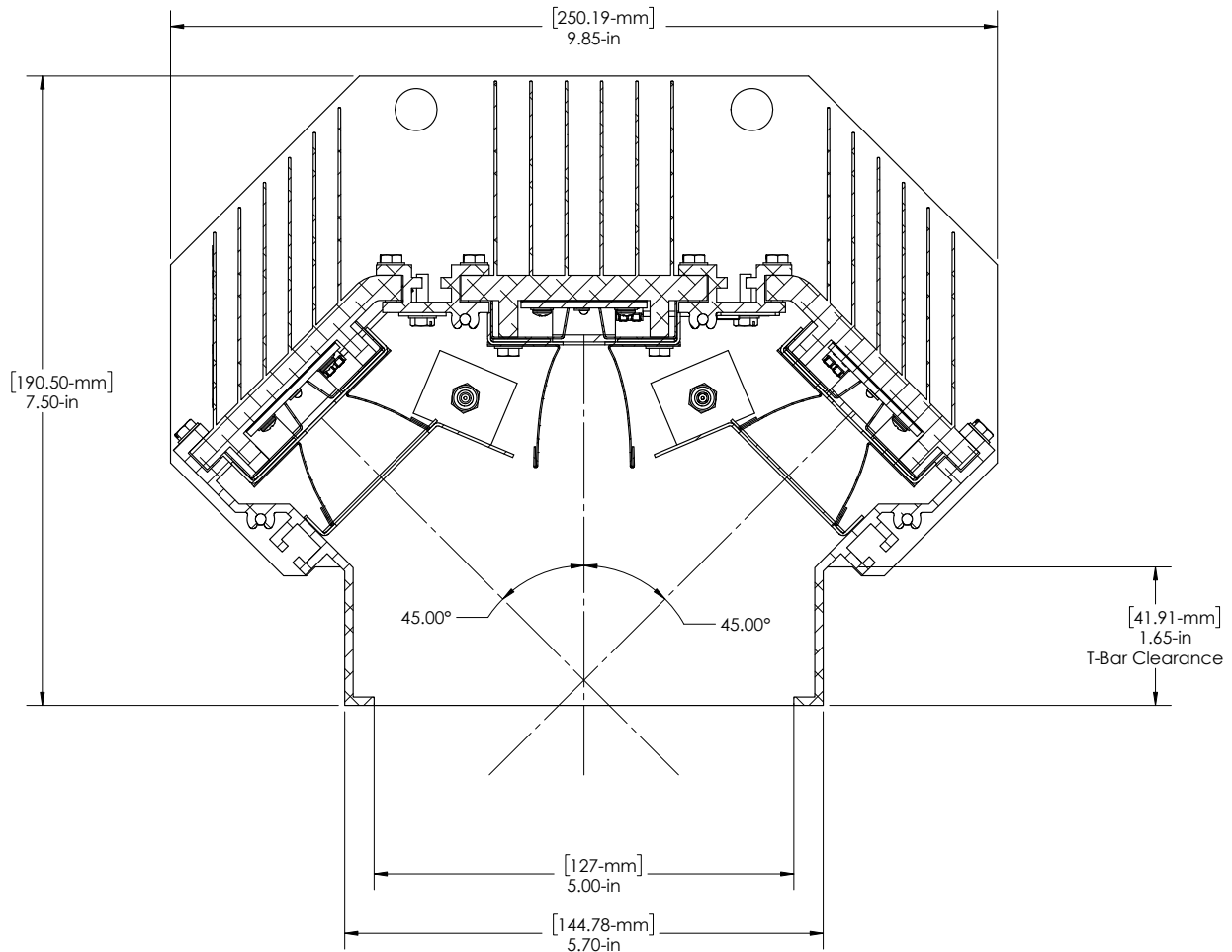
© 2018 Brightline LP All Rights Reserved

Specifications are subject to change without notice.

06/07/18



**Section View**



Shipping Dimensions	
4-foot Fixture	2-foot Fixture
Length: 48.50-in (1231.90-mm)	Length: 24.50-in (622.30-mm)
Width: 11.50-in (291.55-mm)	Width: 11.50-in (291.55-mm)
Height: 13-in (330.20-mm)	Height: 13-in (330.20-mm)

Shipping Weights		
	4-foot Fixture	2-foot Fixture
Task	28 lbs (12.70-kg)	16 lbs (7.26-kg)
Video + Task	38 lbs (17.24-kg)	21 lbs (9.53-kg)
Double Video + Task	48 lbs (21.77-kg)	28 lbs (12.70-kg)

580 Mayer Street - Building # 7 - Bridgeville, PA 15017 USA

Phone: 1.412.206.0106

[www.brightlines.com](http://www.brightlines.com)

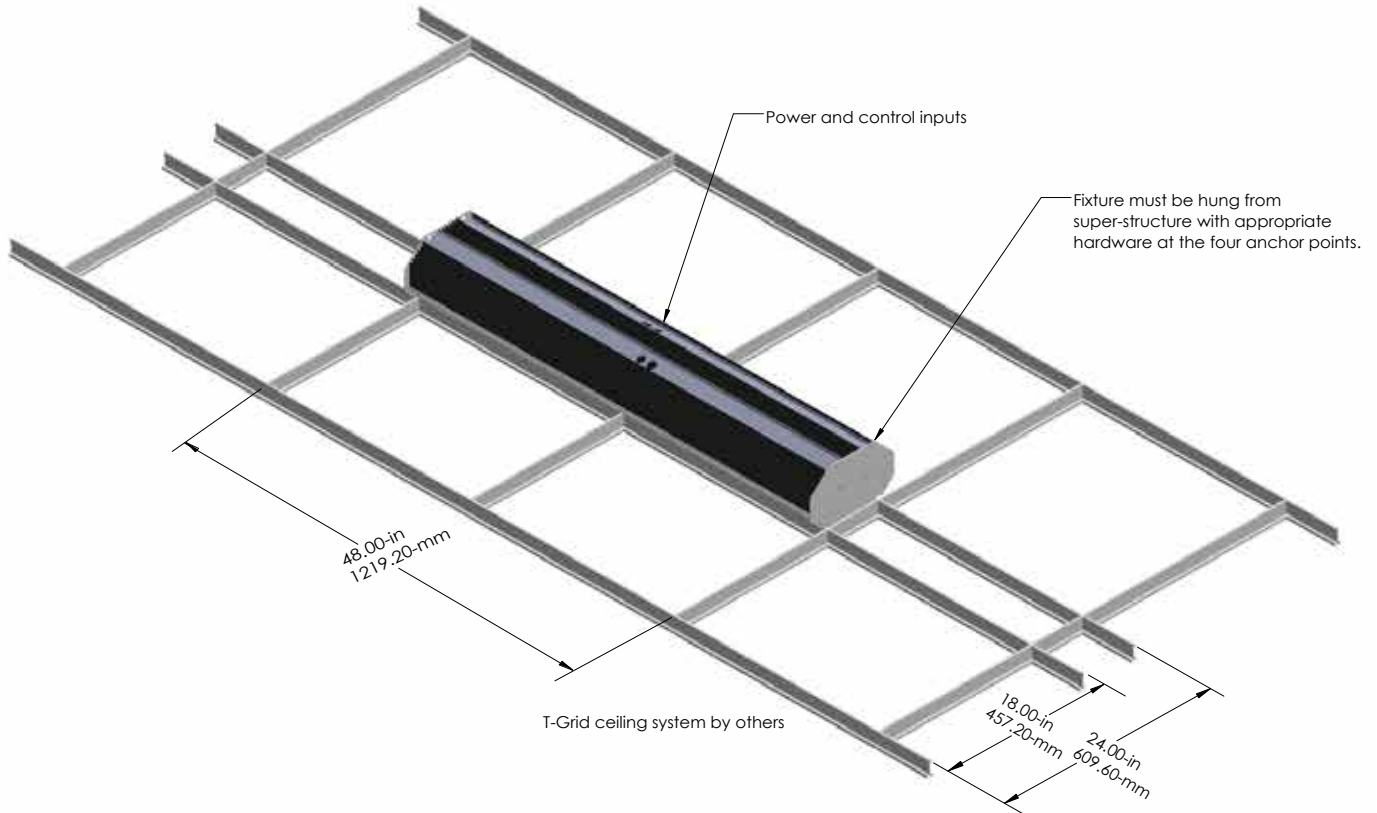


**brightline**

© 2018 Brightline LP All Rights Reserved



## Standard Ceiling Grid Installation



580 Mayer Street - Building # 7 - Bridgeville, PA 15017 USA

Phone: 1.412.206.0106

[www.brightlines.com](http://www.brightlines.com)



**brightline**<sup>®</sup>

© 2018 Brightline LP All Rights Reserved

*Specifications are subject to change without notice.*

06/07/18