



UL Verification Services Inc.
7036 Snowdrift Road
Allentown, PA 18106
610-774-1300



Indoor Distribution Test Report

Relevant Standards
IES LM-79-2008, ANSI C82.77-2002

Prepared For
Brightline
Bldg 7
580 Mayer St
Bridgeville, PA 15017
United States

Catalog Number
LST6XX-CA-XX-XX
Order Number
11969789
Test Number
11969789.02

Test Date

2017-10-09

Prepared By

Derek Smarr, Technician

Approved By

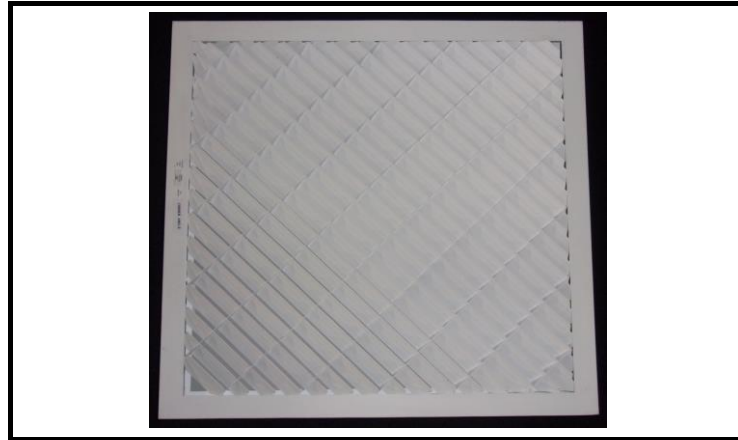
Alexa Lambert, Project Handler

The results contained in this report pertain only to the tested sample.
This report shall not be reproduced, except in full, without written approval of Underwriters Laboratories.
This report must not be used by the client to claim product certification, approval, or endorsement by
NVLAP, NIST, or any agency of the Federal Government.



Luminaire Description: White formed steel and aluminum housing, frosted plastic lens enclosure
Lamp: 288 white LEDs
Mounting: Recessed
Ballast/Driver: One Philips XI075C200V054BPT1 driver

Luminaire



Luminaire Characteristics

Luminous Length: 21.25 in.
Luminous Width: 21.25 in.

Summary of Results

Total Luminaire Output:	3691 Lumens
Luminaire Efficacy:	48.5 lm/w
Maximum Candela:	2431 Candela

Test Conditions

Test Temperature:	24.5 °C
Voltage:	120.0 VAC
Current:	0.6352 A
Power:	76.08 W
Power Factor:	0.998
Frequency:	60 Hz
Current THD:	4.63 %

Laboratory results may not be representative of field performance
Ballast factors have not been applied



Distribution - Goniophotometer

Distribution Test Conditions

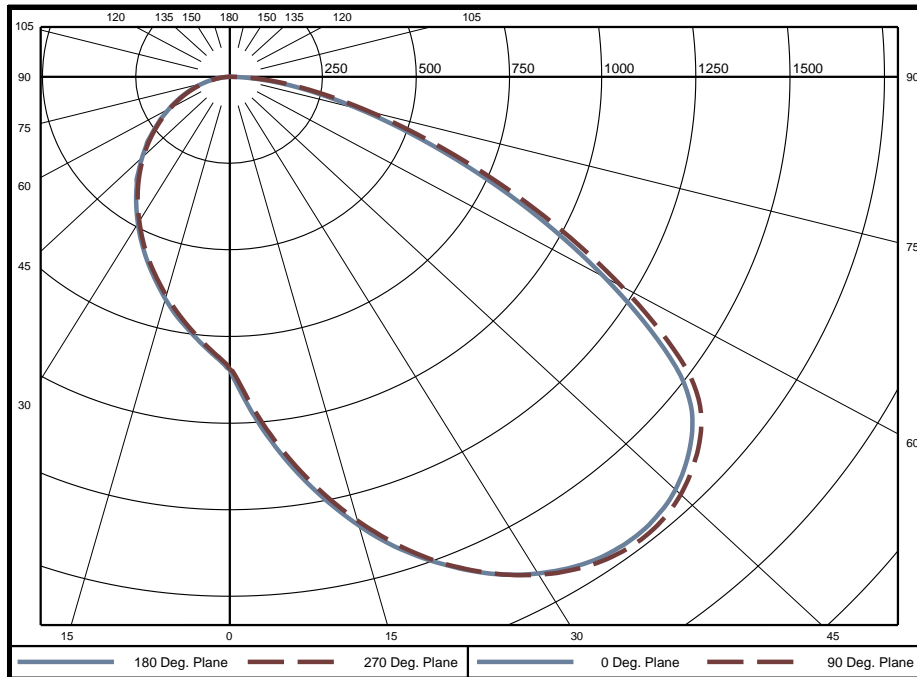
Temperature	Voltage	Current	Power	Power Factor	Frequency	Current THD
24.5 °C	120.0 VAC	0.6352 A	76.08 W	0.998	60 Hz	4.63 %

Summary of Results

Spacing Criteria
 0-180: 2.40
 90-270: 2.42

Total Lumen Output: 3691 Lumens
Luminaire Efficacy: 48.5 lm/w
Maximum Candela: 2431 Candela

Polar Plot



Zonal Lumen Summary

Zone	Lumens	% of Luminaire	Zone	Lumens	% of Luminaire	Zone	Lumens	% of Luminaire
0-5	20.9	0.6%	60-65	261.3	7.1%	120-125	0	0.0%
5-10	65.6	1.8%	65-70	198.1	5.4%	125-130	0	0.0%
10-15	114.1	3.1%	70-75	137.5	3.7%	130-135	0	0.0%
15-20	165.1	4.5%	75-80	86.8	2.4%	135-140	0	0.0%
20-25	216.4	5.9%	80-85	46.0	1.2%	140-145	0	0.0%
25-30	265.6	7.2%	85-90	12.7	0.3%	145-150	0	0.0%
30-35	310.5	8.4%	90-95	0	0.0%	150-155	0	0.0%
35-40	348.5	9.4%	95-100	0	0.0%	155-160	0	0.0%
40-45	375.9	10.2%	100-105	0	0.0%	160-165	0	0.0%
45-50	383.0	10.4%	105-110	0	0.0%	165-170	0	0.0%
50-55	362.6	9.8%	110-115	0	0.0%	170-175	0	0.0%
55-60	320.1	8.7%	115-120	0	0.0%	175-180	0	0.0%

Zone	Lumens	% of Luminaire
0-40	1507	40.8%
0-60	2948	79.9%
0-90	3691	100.0%
90-180	0	0.0%



Candela Tabulation
Horizontal Angle (Degrees)

	0	22.5	45	67.5	90	112.5	135	157.5	180	202.5	225	247.5	270	292.5	315	337.5
0	845	845	845	845	845	845	845	845	845	845	845	845	845	845	845	845
5	1023	1070	1082	1059	1003	925	845	810	781	761	753	757	774	800	842	944
10	1189	1300	1335	1288	1172	1011	836	772	722	691	680	688	713	759	830	1024
15	1342	1518	1584	1509	1328	1084	821	731	663	627	613	621	653	714	811	1093
20	1473	1718	1823	1714	1465	1142	800	683	603	562	550	558	595	666	788	1147
25	1578	1889	2037	1890	1576	1181	772	633	545	502	489	499	538	615	756	1178
30	1656	2026	2215	2035	1660	1204	734	580	488	445	430	441	481	563	716	1189
35	1704	2126	2346	2140	1714	1207	693	527	434	390	376	388	427	510	673	1183
40	1716	2174	2421	2193	1732	1189	646	473	385	339	325	336	374	455	625	1161
45	1689	2153	2378	2176	1708	1147	594	417	329	290	277	288	323	399	572	1117
50	1617	1916	2044	1956	1643	1084	536	361	281	245	234	243	275	343	515	1051
55	1461	1557	1643	1596	1507	1001	473	307	232	203	193	201	227	288	447	957
60	1164	1182	1223	1216	1216	890	405	252	188	164	156	162	183	233	378	838
65	856	819	834	850	902	752	333	200	148	129	122	127	143	182	307	689
70	577	548	552	567	614	566	262	150	110	96	90	93	105	134	233	482
75	359	344	349	356	387	355	189	105	76	65	61	63	72	91	163	297
80	198	197	201	205	217	209	124	66	45	39	35	37	41	53	99	162
85	80	83	87	89	95	94	63	31	19	16	14	14	16	20	40	58
90	2	3	5	6	7	9	8	3	1	1	0	0	0	0	1	1
95	0	0	0	0	0	0	0	0	0	0	0	0	0	0	0	0
100	0	0	0	0	0	0	0	0	0	0	0	0	0	0	0	0
105	0	0	0	0	0	0	0	0	0	0	0	0	0	0	0	0
110	0	0	0	0	0	0	0	0	0	0	0	0	0	0	0	0
115	0	0	0	0	0	0	0	0	0	0	0	0	0	0	0	0
120	0	0	0	0	0	0	0	0	0	0	0	0	0	0	0	0
125	0	0	0	0	0	0	0	0	0	0	0	0	0	0	0	0
130	0	0	0	0	0	0	0	0	0	0	0	0	0	0	0	0
135	0	0	0	0	0	0	0	0	0	0	0	0	0	0	0	0
140	0	0	0	0	0	0	0	0	0	0	0	0	0	0	0	0
145	0	0	0	0	0	0	0	0	0	0	0	0	0	0	0	0
150	0	0	0	0	0	0	0	0	0	0	0	0	0	0	0	0
155	0	0	0	0	0	0	0	0	0	0	0	0	0	0	0	0
160	0	0	0	0	0	0	0	0	0	0	0	0	0	0	0	0
165	0	0	0	0	0	0	0	0	0	0	0	0	0	0	0	0
170	0	0	0	0	0	0	0	0	0	0	0	0	0	0	0	0
175	0	0	0	0	0	0	0	0	0	0	0	0	0	0	0	0
180	0	0	0	0	0	0	0	0	0	0	0	0	0	0	0	0

Average Luminance (cd/m²)

Horizontal Angle (Degrees)

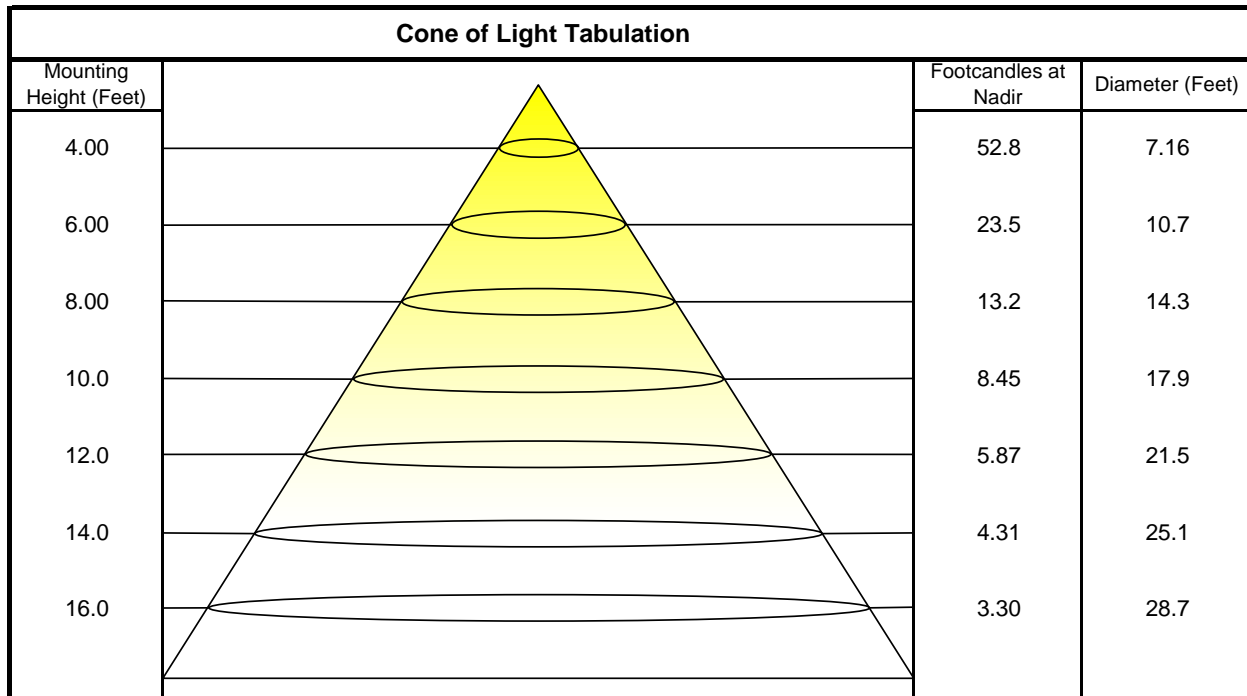
	0	45	90
0	2900	2900	2900
45	8199	11540	8292
55	8742	9831	9018
65	6954	6773	7322
75	4760	4624	5129
85	3154	3438	3732



Utilization of Lumens - Zonal Cavity Method

Effective Floor Cavity Reflectance 20%																		
Ceiling Cavity Reflectance	80				70				50			30			10			0
Wall Reflectance	70	50	30	10	70	50	30	10	50	30	10	50	30	10	50	30	10	0
Room Cavity Ratio (RCR)	** Values are expressed as Lumens delivered to the task surface **																	
0	4394	4394	4394	4394	4291	4291	4291	4291	4101	4101	4101	3926	3926	3926	3766	3766	3766	3691
1	4012	3835	3677	3534	3912	3751	3607	3476	3594	3475	3366	3450	3352	3262	3316	3238	3165	3088
2	3639	3329	3074	2858	3541	3259	3024	2824	3128	2929	2758	3006	2840	2695	2894	2757	2634	2553
3	3304	2906	2599	2353	3211	2847	2562	2332	2736	2491	2290	2634	2425	2249	2538	2362	2210	2128
4	3012	2557	2225	1971	2925	2508	2197	1957	2414	2143	1929	2327	2092	1902	2246	2043	1876	1794
5	2757	2269	1928	1676	2678	2227	1906	1666	2147	1864	1647	2073	1824	1629	2004	1786	1610	1530
6	2534	2028	1688	1444	2462	1992	1671	1437	1925	1638	1424	1861	1606	1411	1802	1575	1398	1319
7	2340	1826	1493	1259	2274	1795	1479	1254	1737	1452	1244	1683	1426	1235	1632	1401	1225	1150
8	2169	1655	1332	1110	2110	1629	1320	1106	1579	1299	1098	1532	1277	1091	1488	1257	1084	1011
9	2019	1510	1197	987	1965	1487	1188	984	1444	1170	978	1403	1152	972	1365	1135	967	897
10	1886	1385	1084	885	1838	1365	1077	882	1328	1061	878	1292	1047	873	1259	1032	869	803

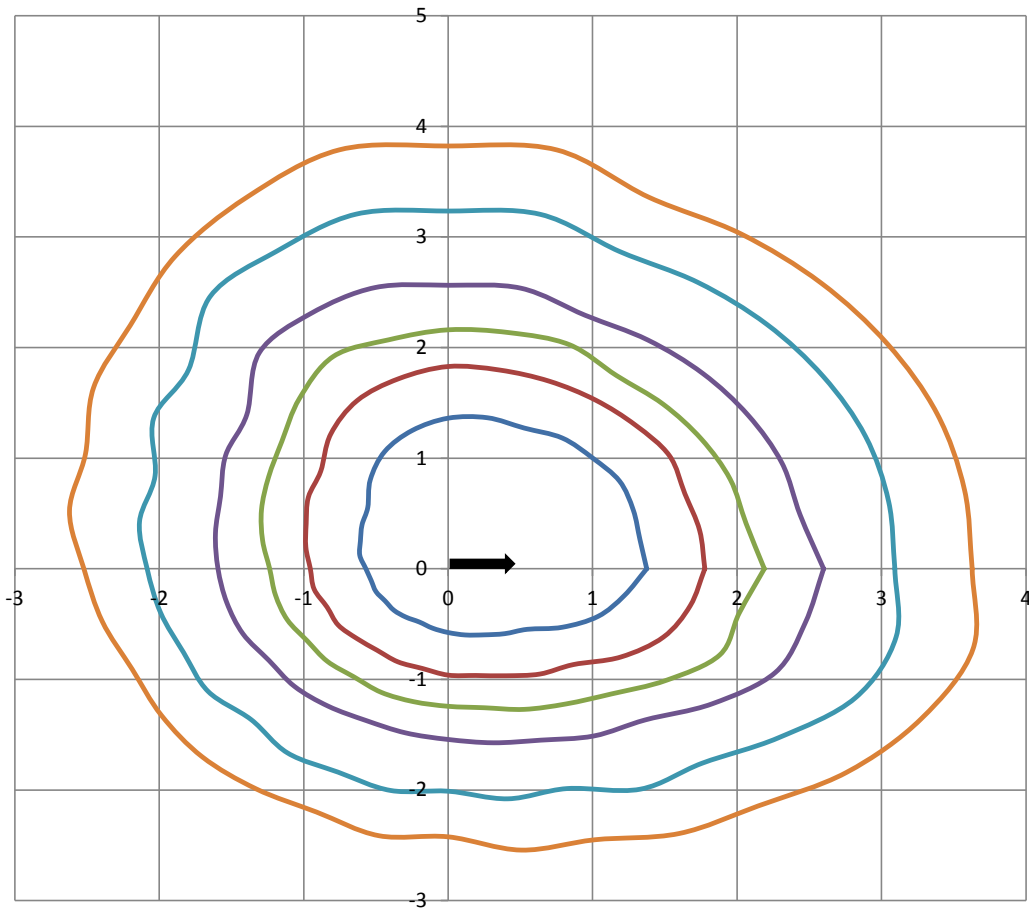
Beam and Field Information	
CIE Type:	Direct
Center Beam Intensity:	845 Candela
Central Cone Intensity:	864 Candela
Beam Flux:	3118.6 Lumens
Beam Angle (0-180):	109.5 Degrees
Beam Angle (90-270):	109.5 Degrees
Field Angle (0-180):	158.5 Degrees
Field Angle (90-270):	158.5 Degrees





ISOFootcandle Plot

Mounting Height - 8 Feet



Grid Lines in Units of Mounting Height

