

winDIM

Operating Instructions



Table of Contents

Getting Started.....	2
Required Equipment.....	2
Equipment Setup.....	2
Installing winDIM.....	2
Starting winDIM.....	2
Setting Up winDIM.....	3
Address the Devices.....	3
Identify the Addresses and Assign Devices to Groups.....	4
Set the Scene Levels.....	5
Operating winDIM.....	5
Using the Control Panel.....	5
Device Status.....	5

Getting Started

The WinDIM software is a computer program that allows you to configure and control DALI ballasts. Only the basic functions of WinDIM are covered in this document; for advanced features please consult the HELP file or contact Brightline for further information.

Remember that in a DALI loop (one DALI-SCI or BUSMASTER) :

1. The maximum number of connected ballasts is 64 (Addresses numbered 0-63).
2. Each loop supports a maximum of 16 groups. Each ballast is capable of being assigned to one or more of these 16 groups.
3. Each ballast on the loop can memorize up to 16 scene level settings. Scenes are independent of groups, and each ballast can have only one setting for each scene number.

Required Equipment

1. Laptop or Desktop PC with Microsoft Windows 95 or higher.
2. Brightline BUSMASTER kit (BusMaster module, 120V-12V AC adaptor, orange DALI 2-pin connector, and DB9 female to female null modem serial cable) or DALI SCI Device if an alternate DALI bus power pack is used.
3. 2-conductor control wire connecting the BusMaster to the ballasts and to any other DALI devices.

Equipment Setup

1. Connect the DALI control wires from the loop to the 2-pin orange connector and plug it in to the BUSMASTER. If using a DALI-SCI, remove the cover on the end and connect the two control wires to the screw terminals and then replace the cover.
2. Connect one end of the null modem serial cable to the BUSMASTER, and the other end to a serial port on your computer. If using a DALI-SCI, connect the serial cable to the serial port on your computer.
3. Start up your computer, and close any programs that use your serial port.

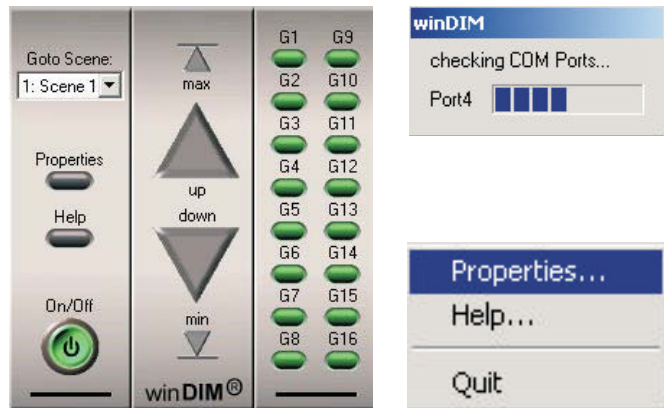
Installing winDIM

Please note: If in a corporate environment, be sure that you have Administrator rights on your computer before attempting to install this program.

1. Create a folder on your hard disk to hold the WinDIM Files (we suggest Program Files\WinDIM) . Copy the files from the WinDIM folder on the CD Rom into your folder.
2. For ease of usage, we suggest that you create a shortcut for WinDIM on your desktop. It needs to point to **WinDIM4.0e.exe** in the above folder.

Starting winDIM

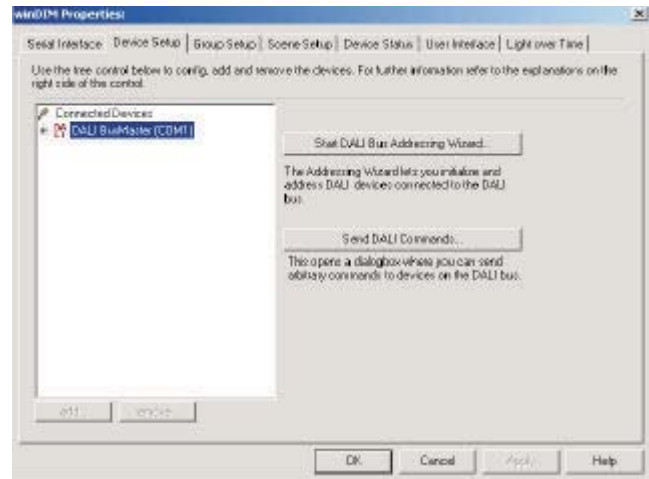
1. Double-click on your desktop shortcut for the winDIM program.
2. You will see the program open by checking the available COM ports.
3. winDIM will always display a light bulb icon in the system tray on the lower right-hand side of your computer screen while it is running. If you left-click it, the control panel will appear. If you right-click it, a menu will appear.



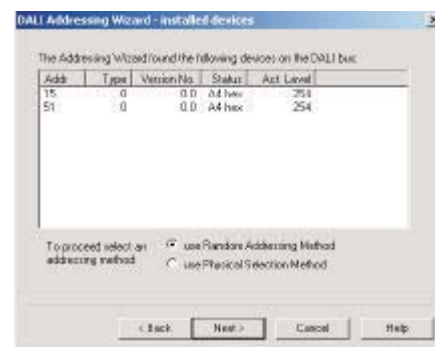
Setting Up winDIM

Address the Devices

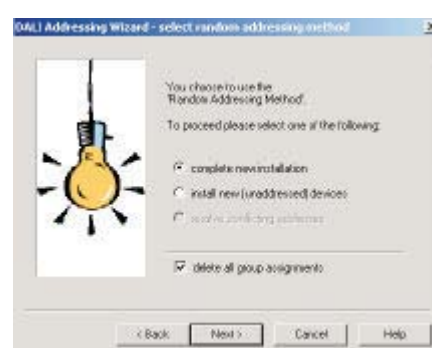
1. From the control panel or the right-click menu, select “Properties”. This will bring you to the Device Setup tab. Highlight the “COM” port and then click “Start DALI Bus Addressing Wizard”.



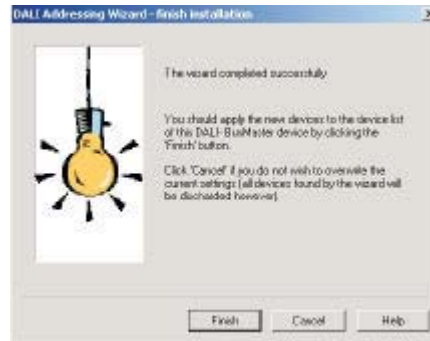
2. The DALI Addressing Wizard will begin to search for existing ballast addresses and will display them on the next screen. When it is finished, make sure “use Random Addressing Method” is selected, then click “Next”.



3. If any addresses appeared in the “installed devices” window that you need to keep, select “install new (unaddressed) devices”, otherwise select “complete new installation”. Checking the box “delete all group assignments” will delete the group assignments from the ballasts when selecting “complete new installation”. Once all settings are correct, click “Next”.

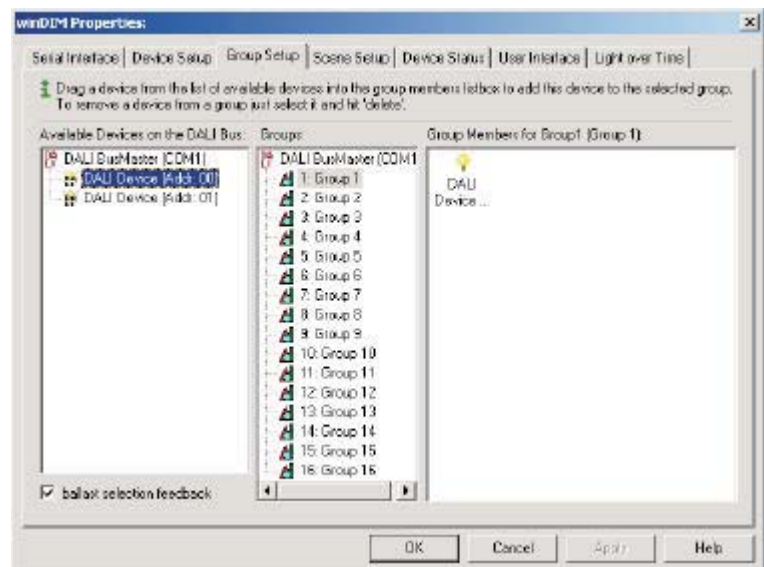


- The DALI Addressing Wizard will begin to assign addresses to the unaddressed ballasts. All of the lights will dim low and then go bright as the ballasts are read or assigned. When the wizard is finished, the addresses of all connected ballasts will appear in the “install new devices” window. Click on “Next” to get to “Finish Installation”, then click “Finish” to exit the wizard.



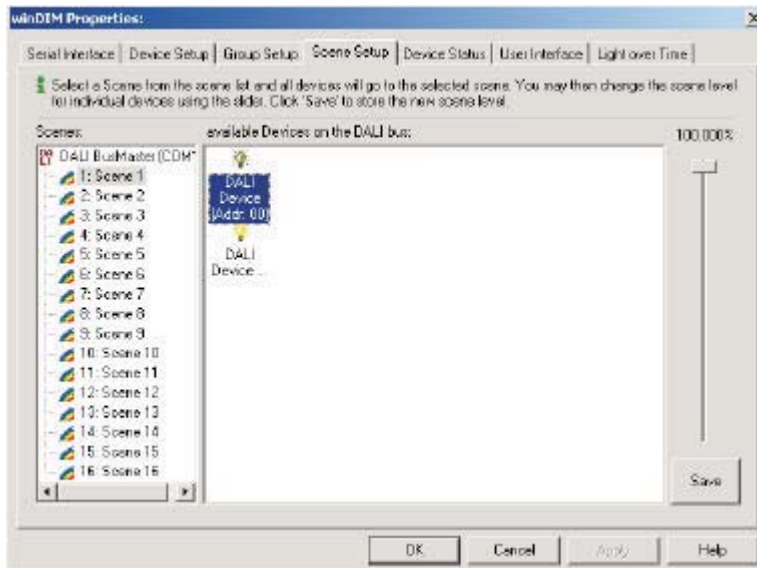
Identify the Addresses and Assign Devices to Groups

- Go to the “Group Setup” tab. You will need to identify the ballast addresses. To do this, check the box “ballast selection feedback” and then click on an address. All ballasts except this address will be dim while the selected address is bright. Select each address and mark down the locations.
- Decide which ballasts/devices you would like to operate together, up to 16 separate Groups.
- To assign the ballasts, select the Group number in the middle window. Left-click and hold the address on the left and then drag it to the window on the far right and drop it.
- When you are done assigning, click on each of the Group numbers to test. Only the ballast belonging to that Group number will be lit bright while the others are dim.
- To remove a ballast from a Group number, select the ballast in the far right window and then press the “Delete” key.



Set the Scene Levels

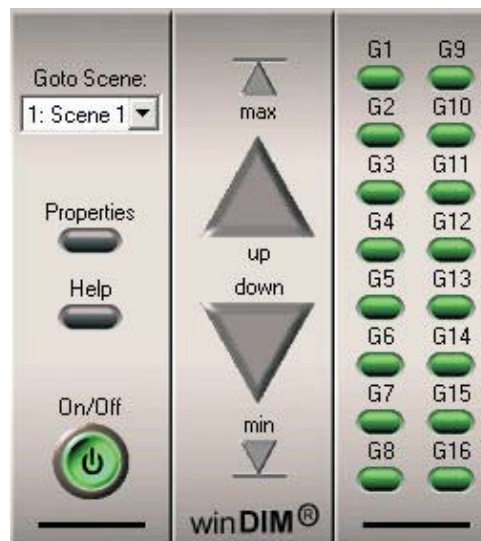
1. Go to the “Scene Setup” tab.
2. Select the Scene number that you want to set up on the left.
3. Select a ballast on the right and then use the slider on the far right to set the ballast to the desired level for that scene. Pull the slider all the way down to set OFF and all the up for MASK (no change). Click “Save” to memorize the scene level to the ballast. You must set each ballast on the loop individually to create the scene.
4. Test the Scenes by selecting each of the Scene numbers on the left.



Operating winDIM

Using the Control Panel

1. To access the control panel, left click the light bulb icon in the system tray on the lower right-hand side of your computer screen.
2. Select the Group or Groups that you want to control on the right (lit green). Select all 16 Groups to control all ballasts on connected loops (Broadcast).
3. The functions are:
 - a. **Max** – Ballasts immediately go to their maximum level.
 - b. **Min** – Ballasts immediately go to their minimum level.
 - c. **Up** – Click and hold to raise light level.
 - d. **Down** – Click and hold to dim light level.
 - e. **On/Off** – Click to turn lights on or off.
 - f. **Go to Scene** – pull down and select a Scene number to recall that Scene.



Device Status

The operational status of all ballasts can be seen on the Device Status tab. A check mark next to the address indicates that it is functioning properly. A red triangle with a yellow exclamation mark indicates a lamp failure. When the lamp is changed, the check mark will reappear when the tab is refreshed.

